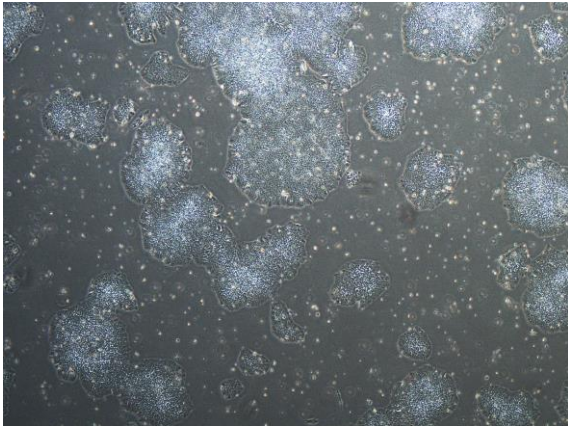
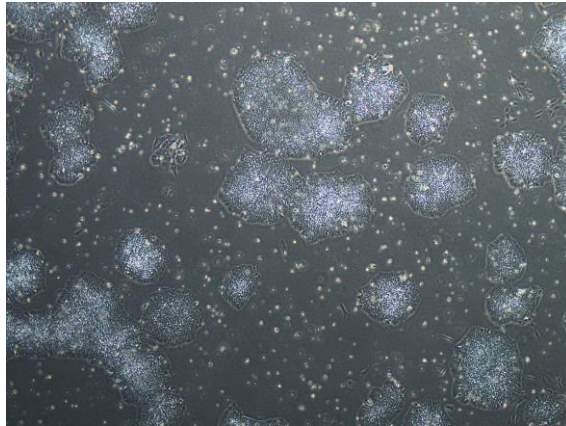


【 CiRA-j-1078 】 Morphology of iPSC colonies

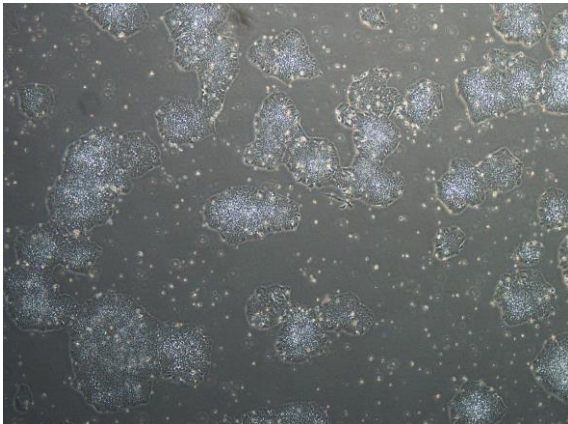
CiRA-j-1078-A: passage-3



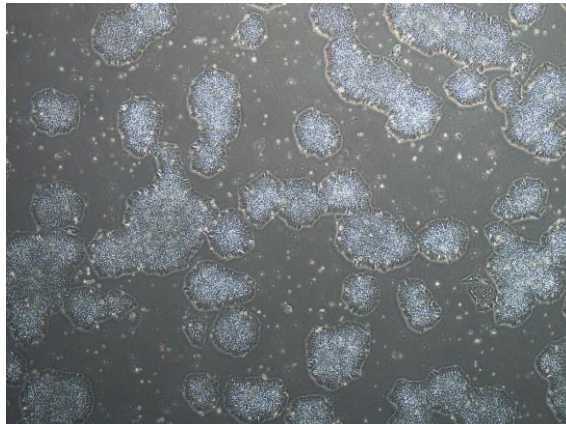
CiRA-j-1078-B: passage-3



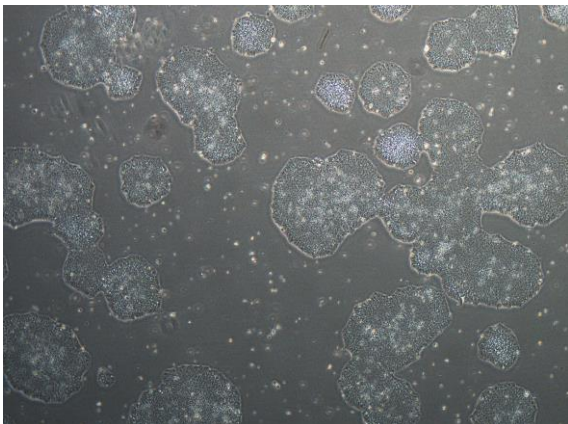
CiRA-j-1078-C: passage-3



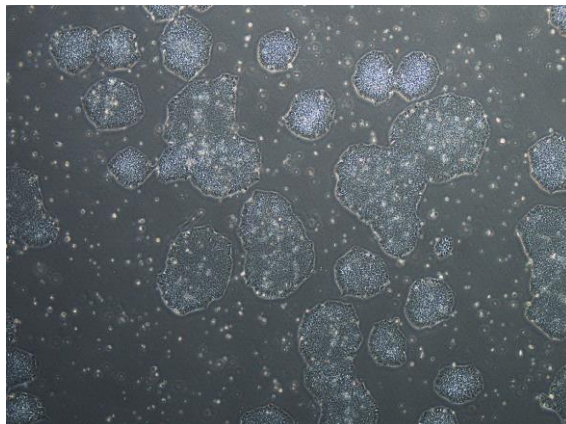
CiRA-j-1078-D: passage-3



CiRA-j-1078-E: passage-3



CiRA-j-1078-F: passage-3



(All images were captured at 4x magnification)